

Comparison of numerical seismic modeling results with acoustic water-tank data

A. Tantsereva (1), B. Ursin (1), N. Favretto-Cristini (2), P. Cristini (2), D. Komatitsch (2) and A. Aizenberg (3)

(1) Department of Petroleum Engineering and Applied Geophysics, NTNU, Trondheim, Norway

(2) Laboratoire de Mécanique et d'Acoustique, Marseille, France

(3) Institute of Petroleum Geology and Geophysics, Russian Academy of Science, Russia

Introduction

Accurate simulations of seismic wave propagation in complex geological structures with great and rapid variations of topography are of primary interest for environmental and industrial applications. Unfortunately, difficulties arise for such complex environments, due essentially to the existence of shadow zones, head waves, diffractions and edge effects. Usually, methods and codes are tested against "validated" ones, but one might wonder which method/code ultimately approaches the "real" solution. An original approach for seismics is to compare synthetic seismic data to controlled laboratory data for a well-described configuration, in order to analyze the respective limitations of each method/code. This is precisely one of the objectives of the BENCHIE project. In this presentation we will present some preliminary results provided by both laboratory experiments conducted in a tank and numerical simulations of wave propagation. The laboratory data have been obtained by zero-offset acquisitions at different ultrasonic frequencies on the Marseille model which is made up of anticlines, fault and truncated pyramid. The numerical results have been obtained by two methods: the Tip-Wave Superposition Method and the Spectral Element Method.

Laboratory simulations

Several laboratory experiments were carried at the Laboratoire de Mécanique et d'Acoustique in Marseille, France. The model used in these experiments, called "Marseille model", is partly based on the French model (French, 1974), but contains original topography like a truncated anticline and a truncated pyramid (see Figure 1, left). Model of size 600mm×400mm×70mm was made of PVC whose acoustic properties are similar to the properties of a real geological medium. This model was immersed in water and illuminated by two different sources at different distances from the surface (10.5 cm and 15 cm). Two piezoelectric transducers with central frequencies equal to 500 kHz and 1 MHz acting like a source and receiver were used for zero-offset seismic configuration. The area covered by the acquisition (500 mm × 300 mm) is shown in green in Figure 1, right). The acquisitions were performed along Y-lines with a spatial sampling $\Delta x = \Delta y$ equal to 2 mm for the frequency 500kHz and to 1mm for the frequency 1MHz.

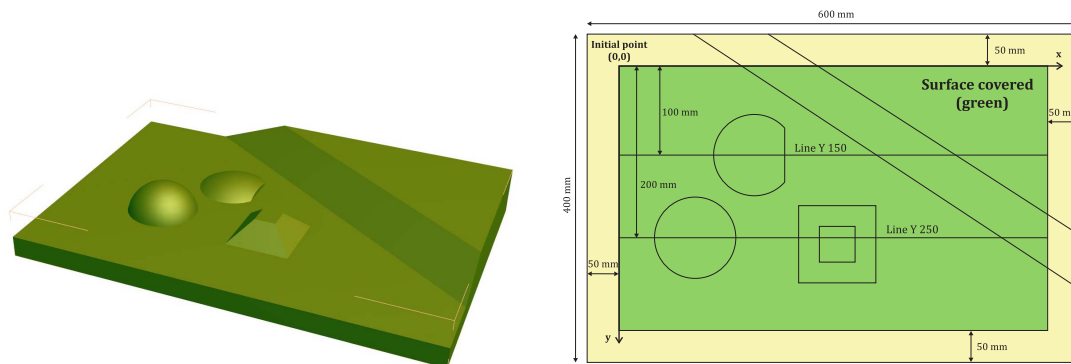


Figure 1 Left: Marseille model with its fault, anticlines and truncated pyramid. Right: acquisition design.

We present few results obtained in the laboratory. The data acquired along two lines, Line Y 150 and Line Y 250 (Figure 1, right), for two transducers are shown in Figure 2. By analyzing Figure 2, we can see that:

- ◇ diffractions at the edges of topographic structures can be observed for both data sets (500 kHz & 1 MHz);
- ◇ the slope of the fault and the slopes of the non-truncated anticline are more visible for 1 MHz than

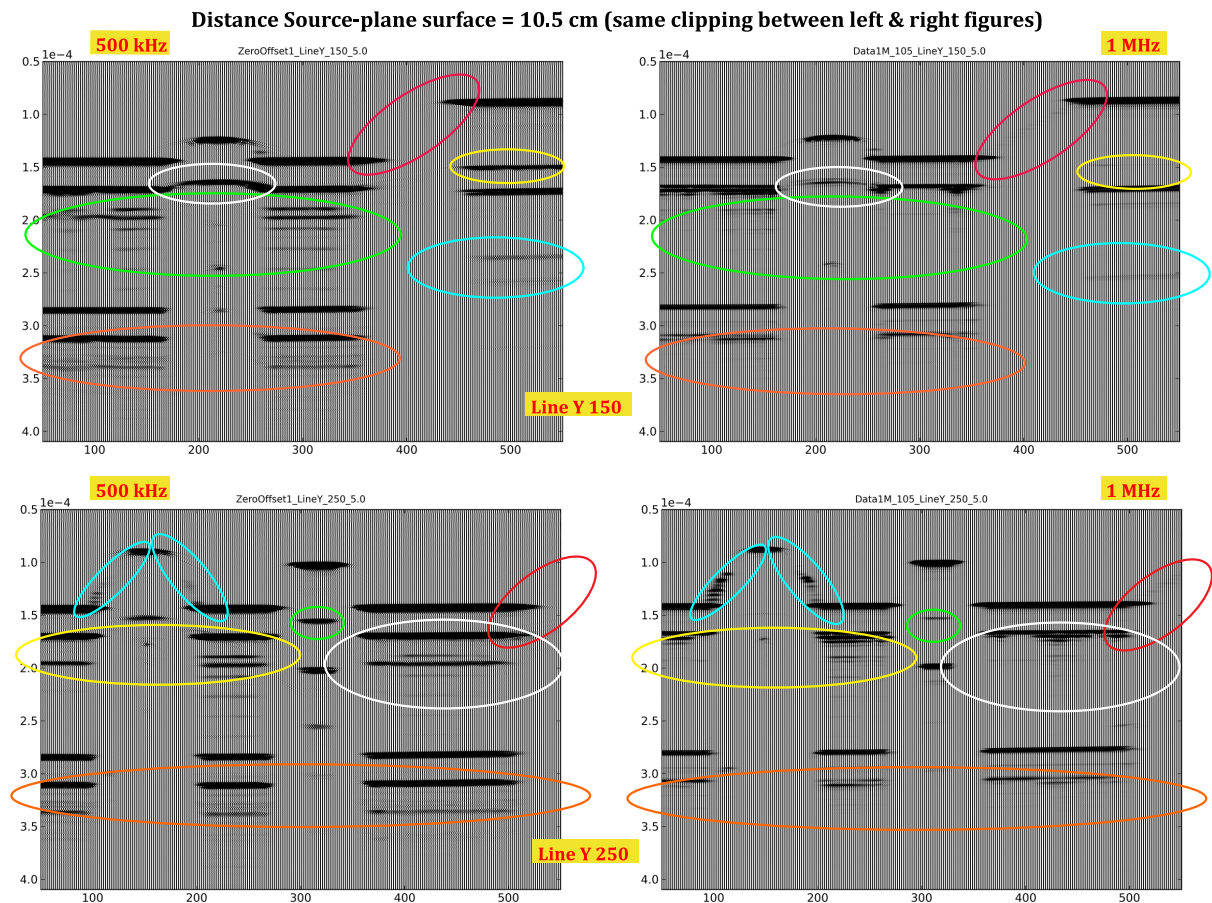


Figure 2 Comparison of data acquired along Line Y 150 (top) and Line Y 250 (bottom) for the 500 kHz transducer (left) and the 1 MHz transducer (right).

for 500 kHz. This is probably due to sampling of the acquisition and the bandwidth associated with each transducer. The steep slopes of the truncated pyramid are invisible;

- ◇ the signals for the frequency 1 MHz are more attenuated than the signals for 500 kHz. This is certainly due to absorption in the PVC. Fewer multiple reflections are present on the data for 1 MHz;
- ◇ signals can be more easily separated in time for the frequency 1 MHz than for the frequency 500 kHz. Indeed, the bandwidth of the 1 MHz-source is greater than the bandwidth of the 500 kHz-source.

Numerical methods

Two numerical methods were tested on "Marseille model" and compared with data obtained in the laboratory: the Tip-Wave Superposition Method (TWSM) and the Spectral Element Method (SEM).

In TWSM seismic wave propagation can be seen as a combination of two consequent processes: propagation inside layers with smoothly varying properties, and reflection and transmission at internal reflectors, which are represented by parameter discontinuities. TWSM is designed to model multiply reflected and transmitted wavefields in layered 3D media (Klem-Musatov et al., 2008; Aizenberg et al., 2011; Aizenberg et al., 2007). It can handle several reflectors of complex structure and is not limited to weak contrasts or small incidence angles. The propagation and reflection/transmission phenomena in each layer are described as action of layer tip-wave beam matrices. Their elements are approximated with the

beams of the tip waves diverging from a small radiating interface element and reflecting/transmitting at each receiving interface element. The method gives the possibility to model the wavefield corresponding to specified wavecodes, as well as to collect the full seismogram within a finite time window.

SEM is based upon a high-order piecewise polynomial approximation of the weak formulation of the wave equation. It combines the accuracy of the pseudospectral method with the flexibility of the finite-element method (Komatitsch and Vilotte, 1998). In this method, the wavefield is represented in terms of high-degree Lagrange interpolants, and integrals are computed based upon Gauss-Lobatto-Legendre quadrature. This combination leads to perfectly diagonal mass matrix, which in turn leads to a fully explicit time scheme that lends itself very well to numerical simulations on parallel computers. It is particularly well suited to handling complex geometries and interface conditions. As a consequence, the accurate simulation of surface wave propagation is straightforward without any additional cost.

Comparison of numerical simulations and experimental data

Package of programs based on TWSM was used for synthetic modeling of the experiments with "Marseille model". We modeled the primary reflection from the top of the PVC model using the 3D elastic version of TWSM. Here we present the results obtained along the Line Y 150 for the transducer with central frequency equal to 500 kHz and the distance from the surface being 10.5 cm. The visual comparison of the total seismogram recorded in the laboratory and the one obtained using TWSM shows that the main structures of the model appear similar on them. Therefore the more detailed comparison of two traces obtained using TWSM and recorded in the laboratory over flat part of the surface is shown in Figure 3. This comparison shows good coincidence of two traces and reveals minor differences in the shape and the amplitude of the signal.

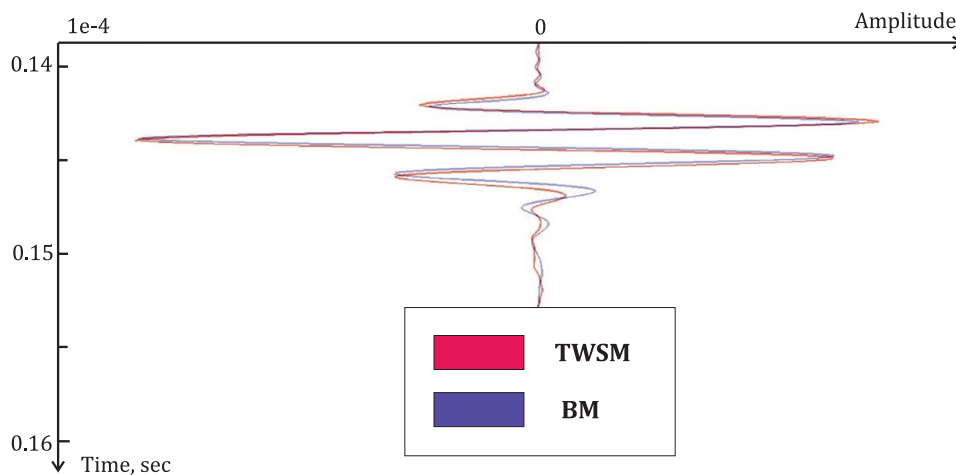


Figure 3 Comparison of two traces. Blue: recorded in the laboratory, red: obtained using TWSM.

Numerical simulations of wave propagation in the time domain over the "Marseille model" were performed using SPECFEM2D, a 2D software which implements the SEM. The model was meshed with quadrangles using the open source software Gmsh. Simulation of directional directivity of standard ultrasonic transducers was performed using a set of equidistant omnidirectional sources (like a horizontal array) whose amplitude is weighted by a Hamming window. An example of the type of radiation that can be simulated numerically is shown in Figure 4. We can see clearly in Figure 4 that the radiation of the simulated source is directed along the vertical. This radiation is obtained with 51 point sources distributed over a line length of 2.54 cm which corresponds to the diameter of the transducer used in the experiments performed for the 500 kHz frequency. Some numerical simulations of wave propagation in the vicinity of the truncated anticline of the "Marseille Model" are shown in Figure 4. They illustrate

the different kind of effects that can be encountered with such a geometry.

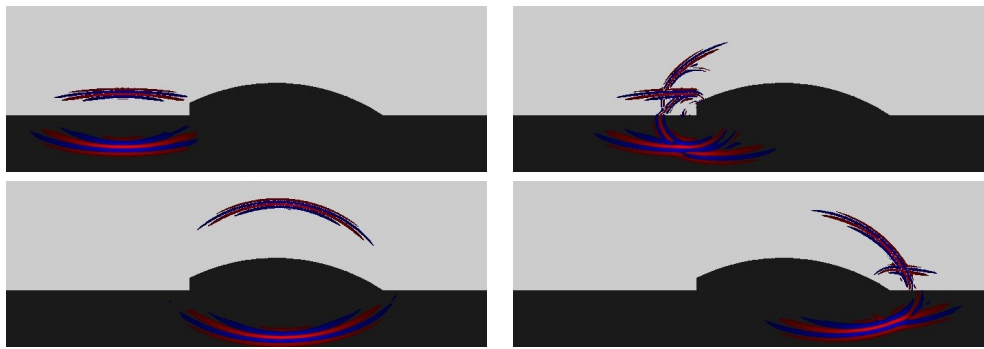


Figure 4 Simulations of wave propagation over the truncated anticline using SEM.

Conclusions

The objective of the international project BENCHIE, which brings together laboratories in France, Norway and Russia, is to provide an original alternative for validation of numerical methods, widely used in seismics nowadays. This comparison should help to choose the right strategy for the further development of these methods in order to simulate higher performance (accuracy and speed) of wave propagation (direct problem) and seismic imaging (inverse problem), which is of major interest for environmental and industrial applications. First experiments were performed using a geological model with strong 3D topographies. Measurements of ultrasonic waves reflected at each point on the surface of the geological model were performed and analyzed in order to improve the understanding of the physical mechanisms involved in the interaction of the waves with irregular surface. Numerical simulations of wave propagation, based on the Tip-Wave Superposition Method and the Spectral Element Method, were carried out under the conditions of the tank experiments. Comparison of the first numerical simulations with experimental data has revealed very interesting results, but also the limitations that should be overcome in future experiments.

Acknowledgements

We would like to thank the INSIS Institute of the French CNRS, the Aix-Marseille University, the Carnot Star Institute, the VISTA project and the Norwegian Research Council through the ROSE project for financial support.

References

- Aizenberg, A., Ayzenberg, M. and Klem-Musatov, K.D. [2011] Seismic diffraction modeling with the tip-wave superposition method. *73th EAGE Conference & Exhibition*, B018, Extended Abstracts.
- Ayzenberg, M., Aizenberg, A., Helle, H.B., Klem-Musatov, K.D., Pajchel, J. and Ursin, B. [2007] 3D diffraction modeling of singly scattered acoustic wavefields based on the combination of surface integral propagators and transmission operators. *Geophysics*, **72**(5), SM19–SM34.
- French, W.S. [1974] 2D and 3D migration of model-experiment reflection profiles. *Geophysics*, **39**(3), 265–277.
- Klem-Musatov, K.D., Aizenberg, A., Paichel, J. and Helle, H.B. [2008] *Edge and Tip diffractions: Theory and Applications in Seismic Prospecting*. SEG.
- Komatitsch, D. and Vilotte, J.P. [1998] The spectral element method: an efficient tool to simulate the seismic response of 2d and 3d geological structures. *Bulletin of Seismological Society of America*, **88**, 368–392.